



The Type 5745 strain ring was originally designed to monitor the strain on large structures such as bridges - however, its ease of installation and versatility have made it popular in many other applications. They are often used when it is impractical to fit load cells, as they can be installed at any point on a structure.

- **Easy installation and removal**
- **Large \pm linear strain range**
- **Sealed to IP67**
- **High accuracy**

Mounting blocks are fixed to the surface of a structure and the strain ring is then simply bolted to the mounting blocks and installation is complete. This makes it ideal for retrofitting to existing structures where strain gauging or load cells would be difficult to fit.

Designed to be mounted on structural steel and to have matching thermal expansion characteristics, the unique attributes of the Type 5745 strain ring make it far superior in accuracy and versatility to all other 'bolt on' designs.

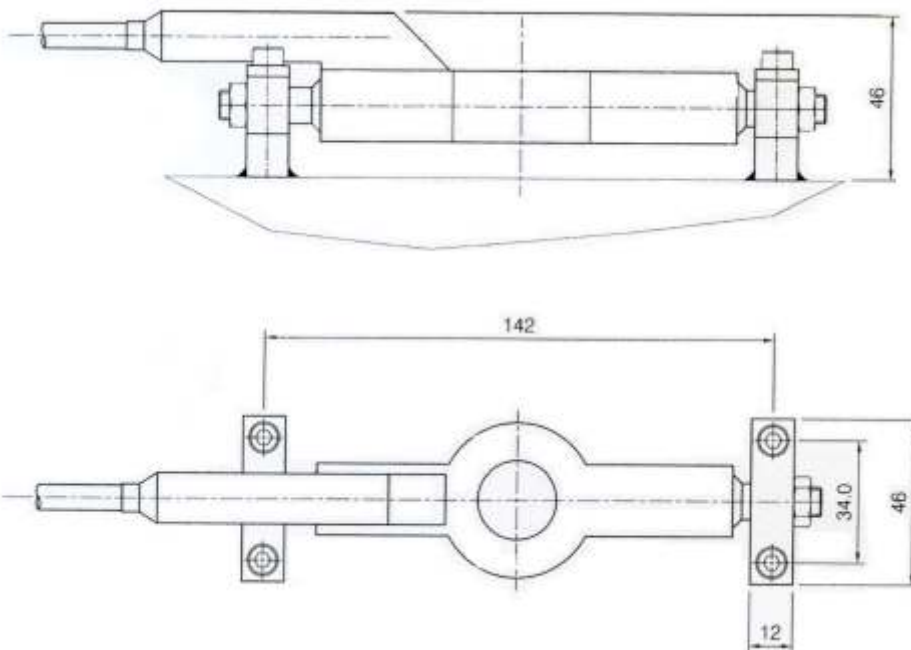
Product

Type 5745 Sealed Strain Ring



The World of Load
Measurement and
Stress Analysis

Type	Strain sensor
Material	Stainless steel, 316
Encapsulation	PU with integral cable
Linear Surface Range	± 800 microstrain
Sensor Output	1 mV/V @ 800 microstrain
Linearity (typically)	$\pm 0.2\%$
Recommended Excitation Voltage	+1 to +5V
Bridge Resistance	350 ohm
Shear on Mounting @ 1000 Microstrain	100N
Current Consumption	14mA @ 5V
Operating Temperature	-15 to +80°C
Cable Type	4 core screened PU
Cable Length	10 metre or as specified



Dimensions in mm

Strainstall UK Ltd
9-10 Mariners Way
Cowes
Isle of Wight
PO31 8PD

Tel: +44 (0)1983 203600
Fax: +44 (0)1983 291335
Email: sales@strainstall.com
Website: www.strainstall.com