



The Strainstall Rail Points Load Pin has been specially designed and developed using our unique experience in producing high quality load pins to measure operating forces in mechanical systems.

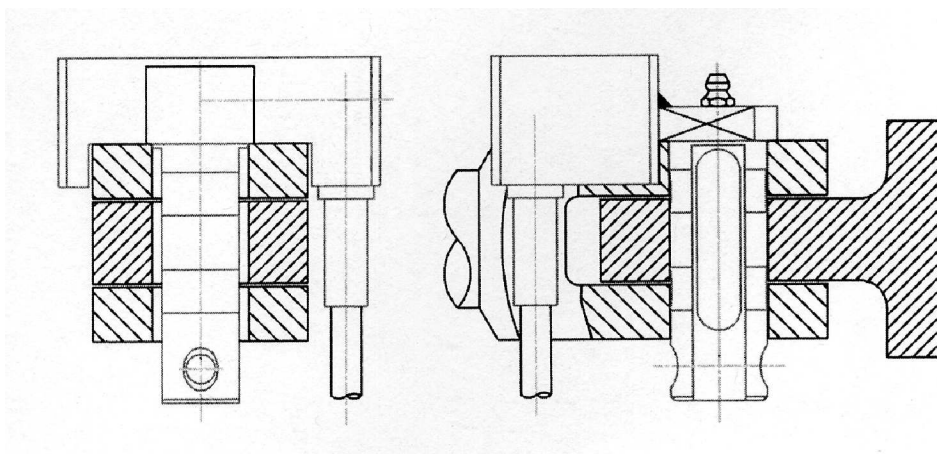
- **Easy to install**
- **Replaces existing pin with no modifications to the system**
- **Stainless Steel Construction**
- **Optional external Isolation Amplifier**

The rail points pin is used in systems for advance warning of points failure, allowing maintenance teams to take preventative action. They also measure clamping forces enabling correct setting of the point mechanism, and are supplied with built-in amplifiers to give a 4-10mA output. An optional external Isolation Amplifier is also available.

As with all load cells, the rail points pins can be used with Strainstall's range of standard and special instrumentation packages. Load cells and systems are supplied with full calibration certification.

### Typical Specification

Type Numbers	5799 - 4ft Points Mechanisms
Related Load	15kN
Proof Load	150% of rated load
Nominal Output	4-20mA
Recommended Supply Voltage	24V
Maximum/Minimum Supply Voltage	30V / 18V
Bridge Resistance	700 ohm nominal
Operating Temperature	-10 to +60 C.
Accuracy	Better than $\pm 1\%$ of rated load
Repeatability	Better than $\pm 0.5\%$ of rated load
Pin Material	High tensile stainless steel
Environmental Protection	IP68



Type **5799** Load Pins  
for 4ft Rail Points Mechanisms

Patented

Strainstall UK Ltd  
9-10 Mariners Way  
Cowes  
Isle of Wight  
PO31 8PD

Tel: +44 (0)1983 203600  
Fax: +44 (0)1983 291335  
Email: [sales@strainstall.co.uk](mailto:sales@strainstall.co.uk)  
Website: [www.strainstall.com](http://www.strainstall.com)